

## 1 Setting up SS-G

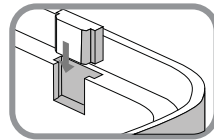
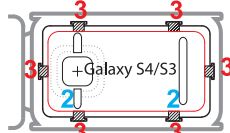
SS-G is preset for #Galaxy S4/S3\* without phone jacket.

### For Galaxy with phone jacket

Customization can be made on SS-G for #Galaxy S4/S3\* with phone jacket of no more than 2mm thick. Take off the pre-installed spacers from the spacer slots and replace them with smaller size spacers supplied with the package.

Do not use the side spacers which hold the phone too tight as it may damage the phone. Replace with smaller size spacers is recommended.

Pre-installed 3mm and 2mm spacers



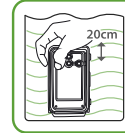
## 2 Waterproof test for SS-G

Close the housing without phone and flip the lock to the front of the housing, lock the housing securely. Submerge SS-G into water of minimum depth of 20cm for 5 minutes.

Take the housing away from the water and observe if there is any water leak inside the housing

If not, the housing is leak proof. Dry SS-G with dry cloth or paper towel completely. Open SS-G by lifting the sliding knob at the lock and save it for later use.

Refer to manual for maintenance if leak presents.



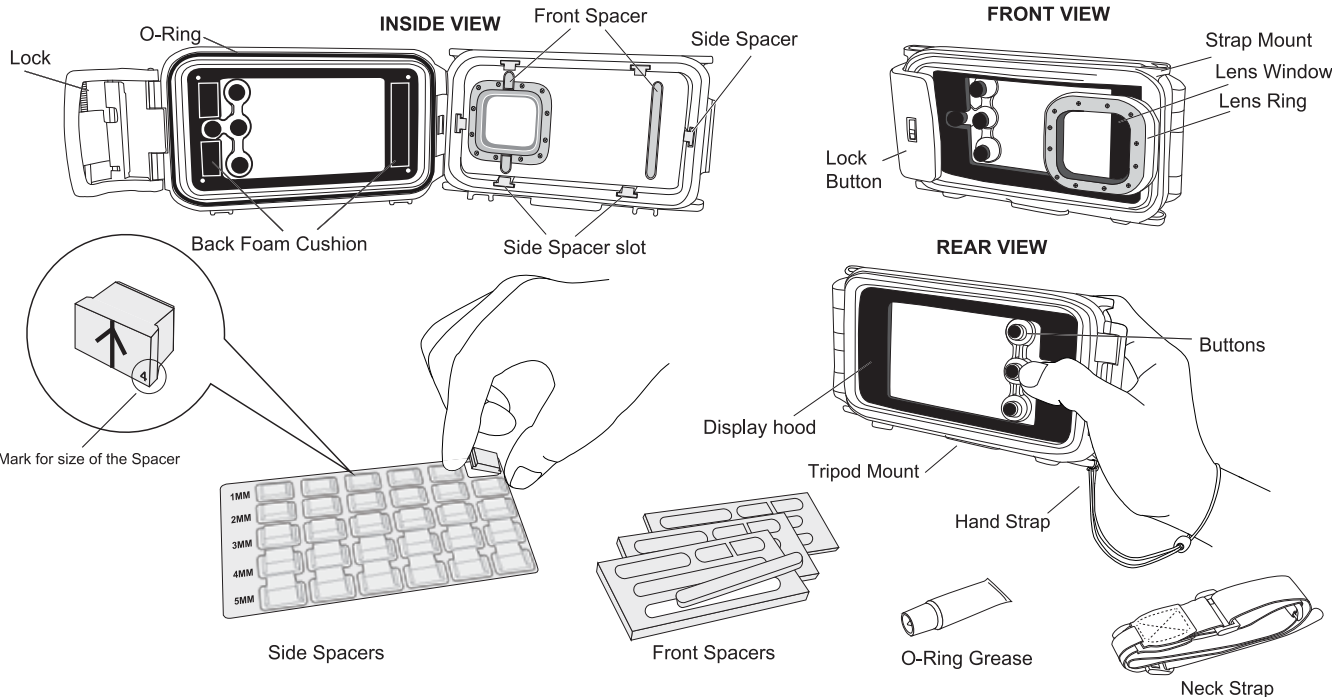
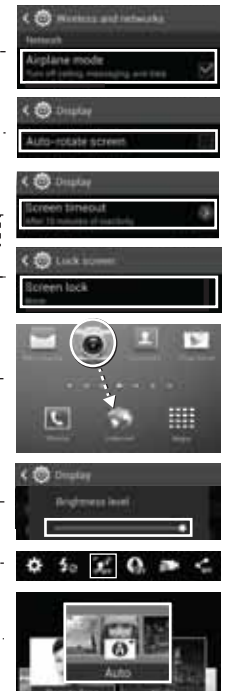
## 3 Settings of the phone

Make settings and check your Phone in a dry and clean location:

- Set the Phone to Airplane Mode and switch off all alarms and notifications.
- Disable Auto-rotate screen.
- Set Screen timeout to a maximum of 10 minutes.
- Set Screen Lock to "None".
- Move the Camera icon to the bottom centre of the screen.
- Set brightness of the screen to Max.
- Set camera flash to "off".
- Make sure the phone is fully charged.
- For #Galaxy S4 users: Only use the Auto mode for photo taking.

Load the Galaxy into the Seashell housing after all of the settings have been made.

Do not move any icons which connects to the internet to the bottom bar of the screen.



## 4 Operation of SS-G

Load the Phone into SS-G housing. Before closing the housing, turn on and unlock the Phone.

Close the housing and check if it is securely locked.

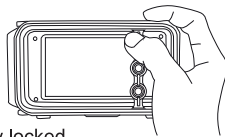
Press the corresponding button to activate the camera function.

Take pictures, switch between picture and video mode by pressing buttons.

Read the user manual to ensure the best performance and durability of the SS-G.



Proprietary Seashell apps "Seashell Lite" is available from Google Play Store for easier use, especially underwater.



**For maintenance trouble shooting and other information, please refer to user manual.**

# Galaxy is a registered trademark of Samsung Inc.

# Seashell and Seashell logo are the registered trademark of Zear Corporation Limited.

\* Galaxy S3 must be used with our professional photography app "Seashell Lite". Please refer to User Manual.